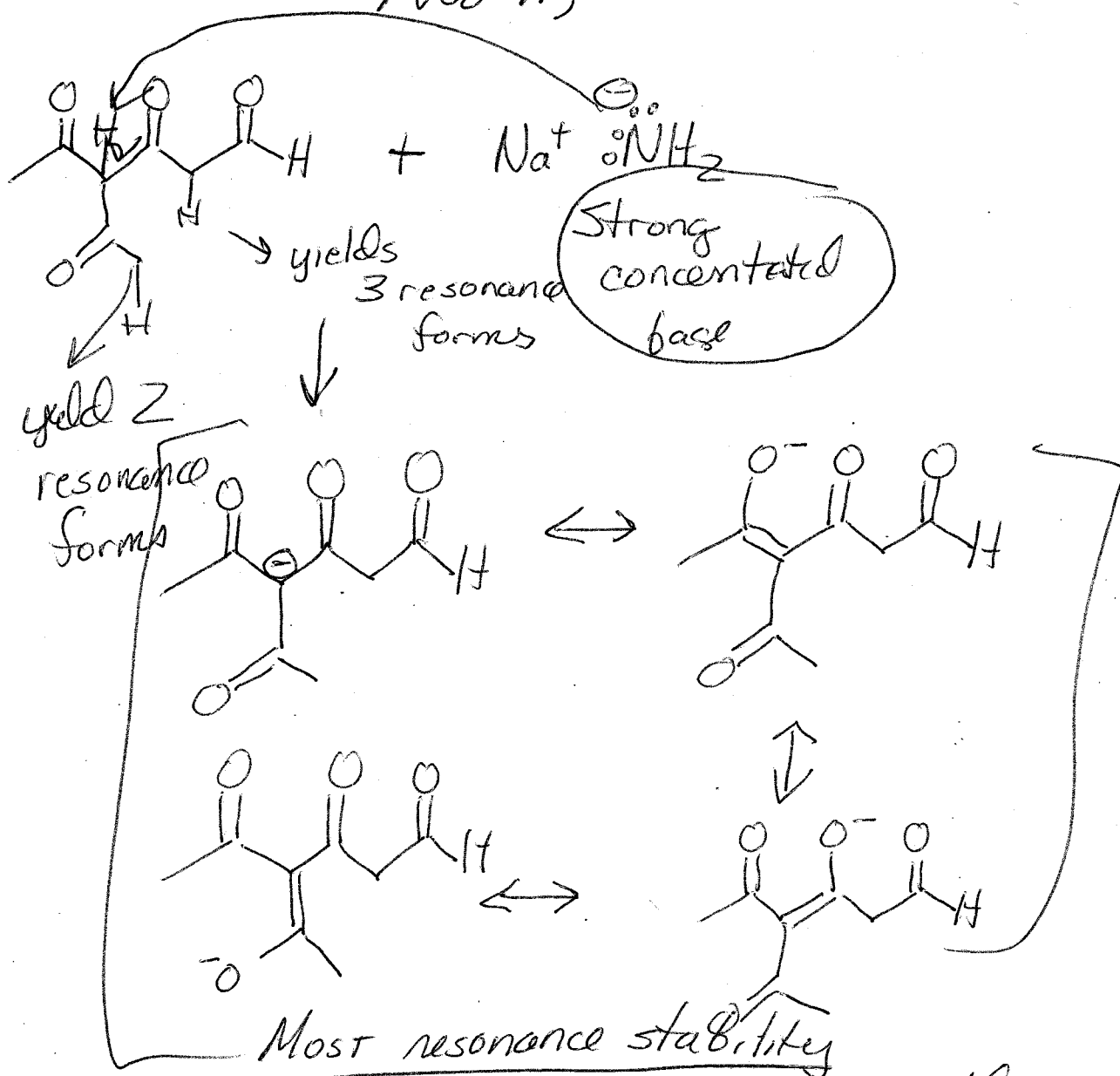


Answers

Problem Set

1/4

Nov 11, 2011



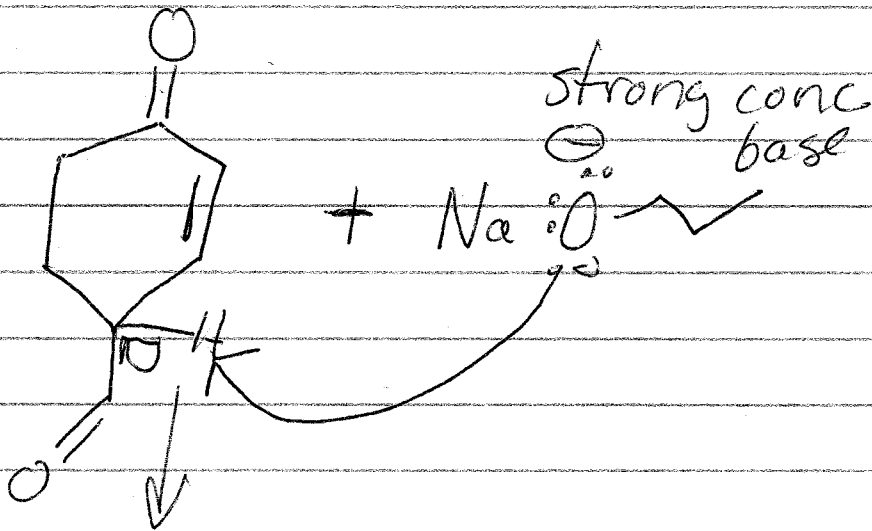
+ NH_3 of possible reactions

Most stable base \therefore weakest base

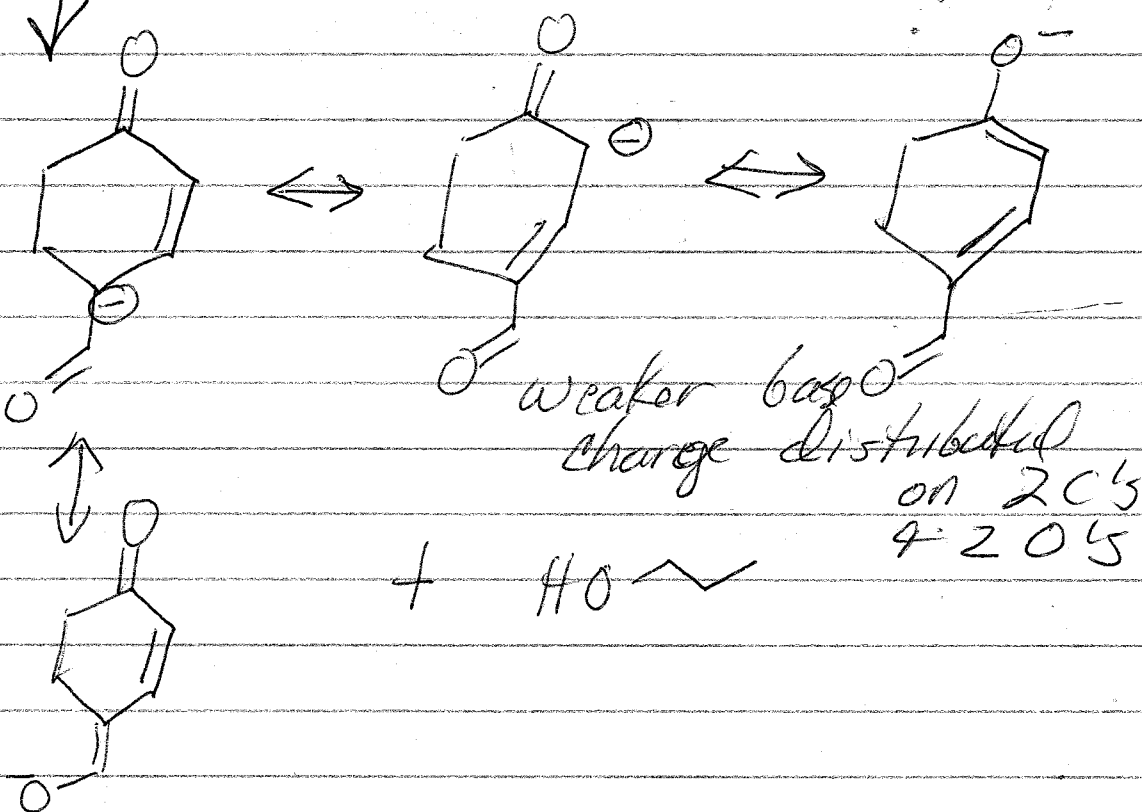
Stronger base \longrightarrow Weaker base

Nov. 11, 2011

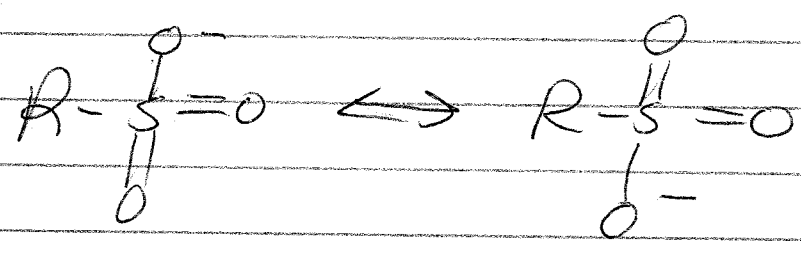
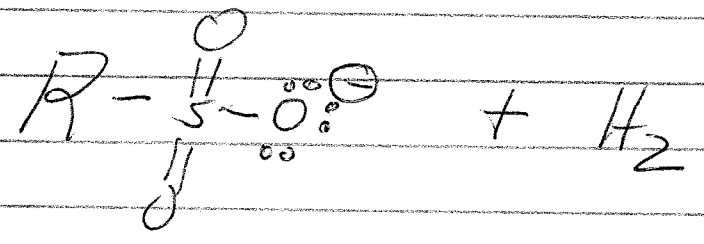
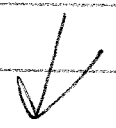
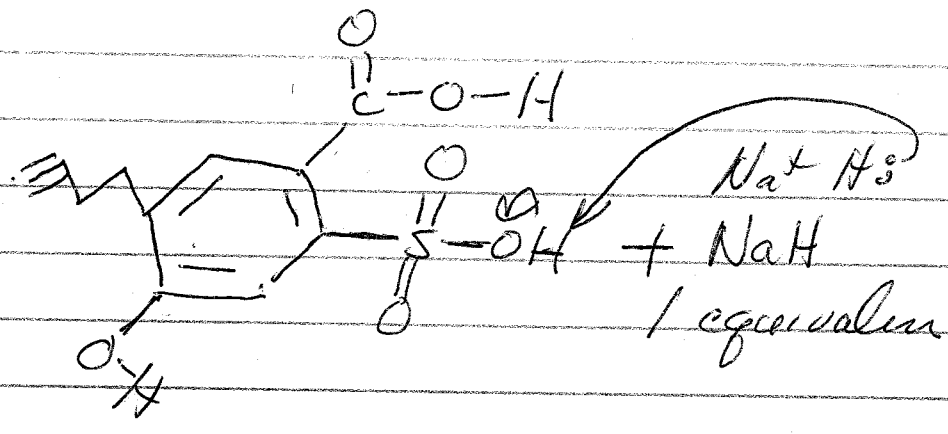
2/4



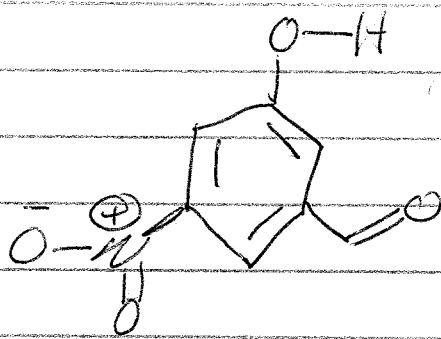
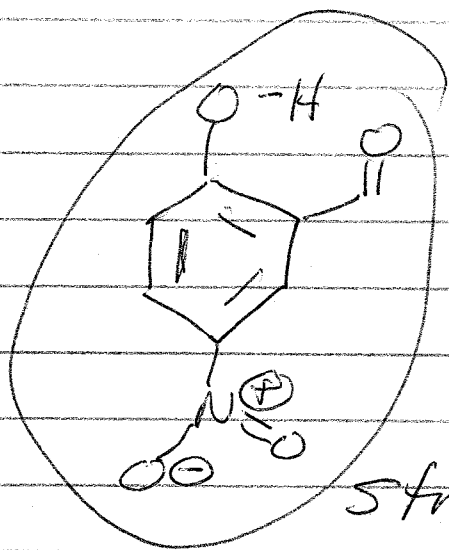
Most acidic hydrogen
Why leads to most stable base



3/4



Most RESONANCE STABILITY
Charge on 3 Oxygens

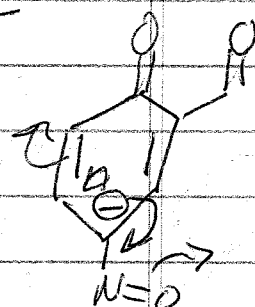
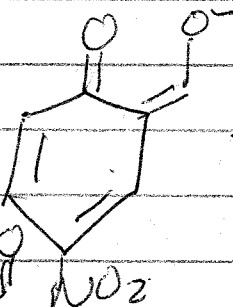
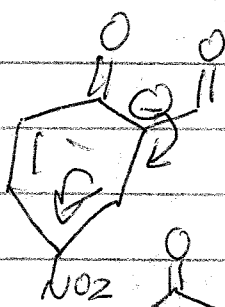
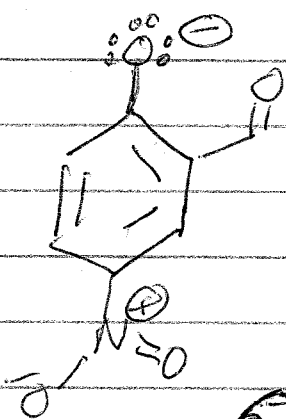


4/4

Stronger base \rightarrow Weaker acid
 Weaker base \rightarrow Stronger acid

Which is stronger acid

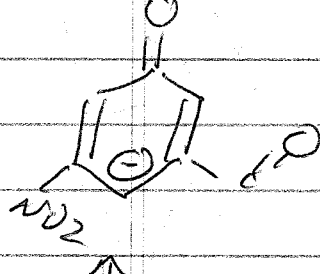
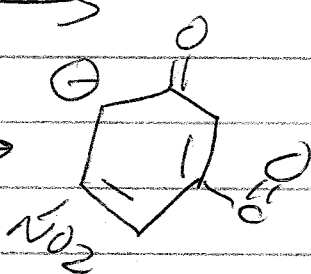
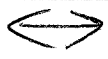
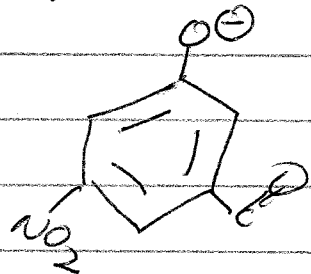
Draw Conjug base



6 resonance forms

Weaker base

~~More coming~~



4 resonance forms

Rest of key coming to monow

